

New Urban Trends

*Jascha Franklin-Hodge - Chief Information Officer - City of Boston
June 2016*

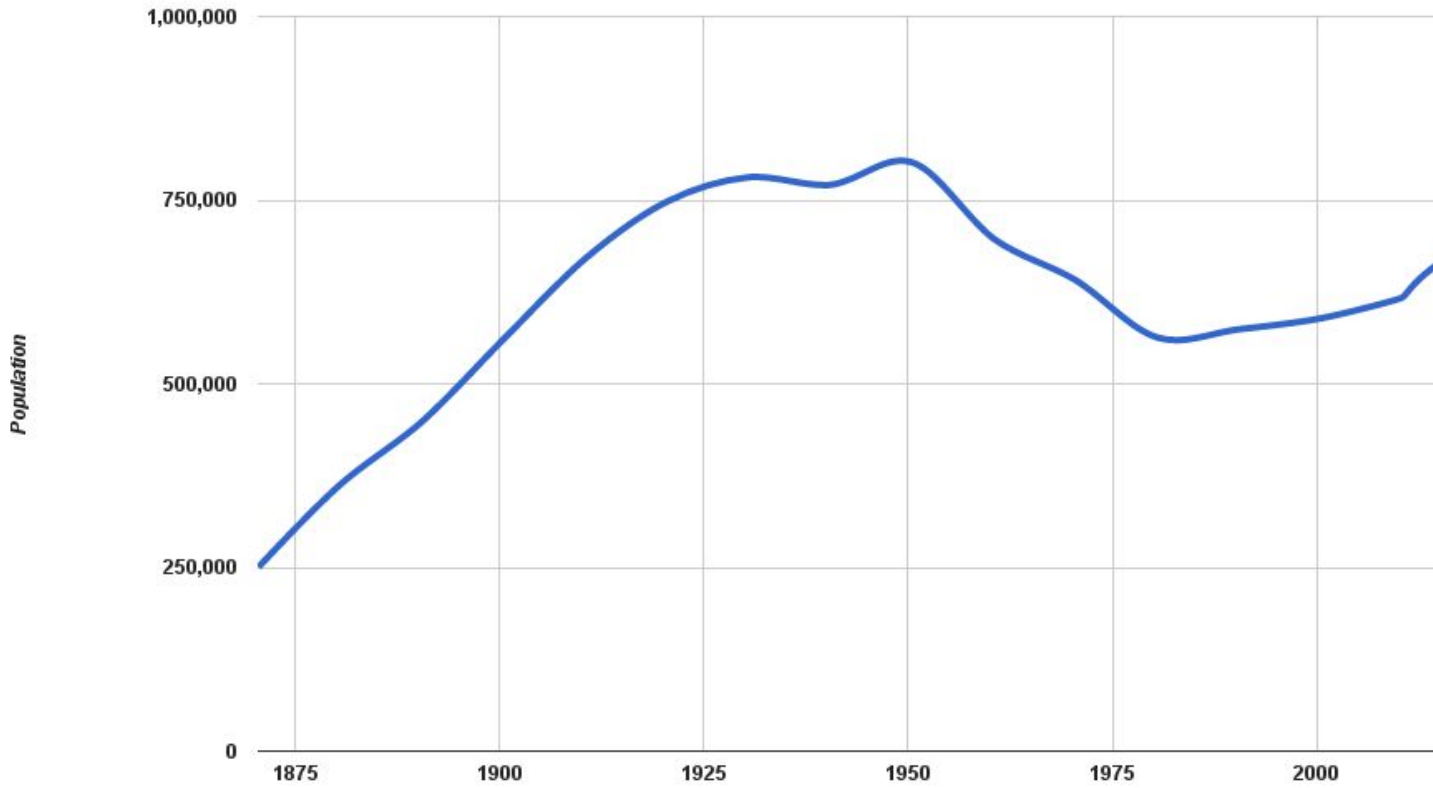


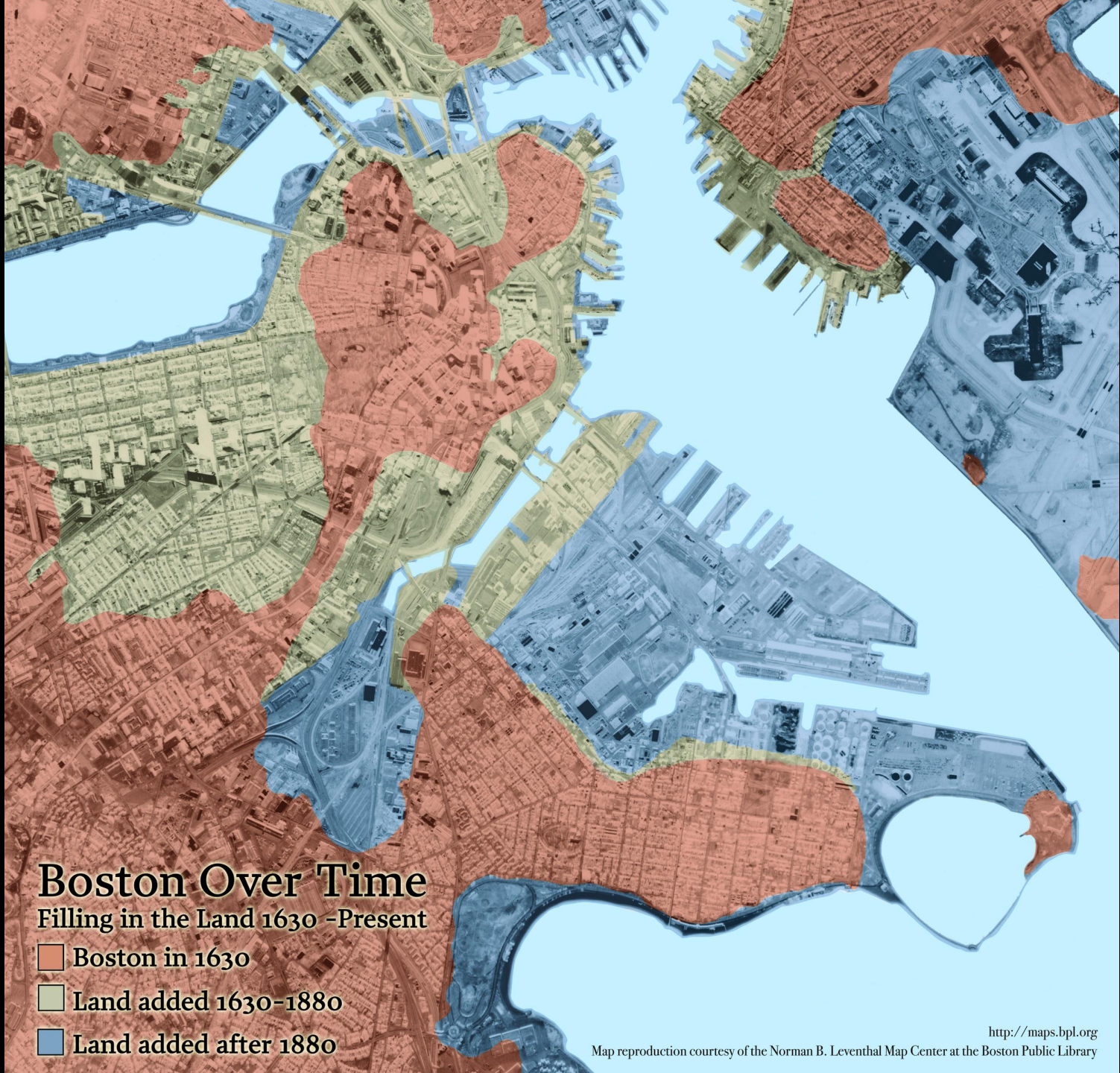
City of Boston
Mayor Martin J. Walsh



Innovation & Technology

City of Boston Population (1870 - 2015)





Boston Over Time

Filling in the Land 1630 - Present

-  Boston in 1630
-  Land added 1630-1880
-  Land added after 1880

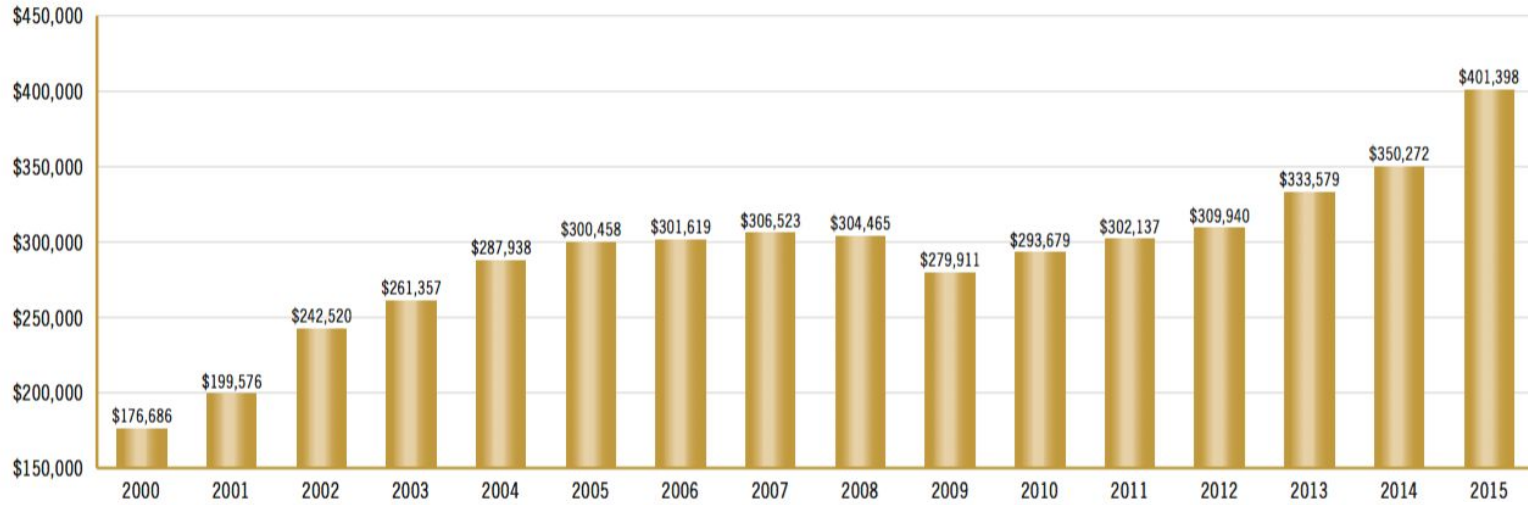




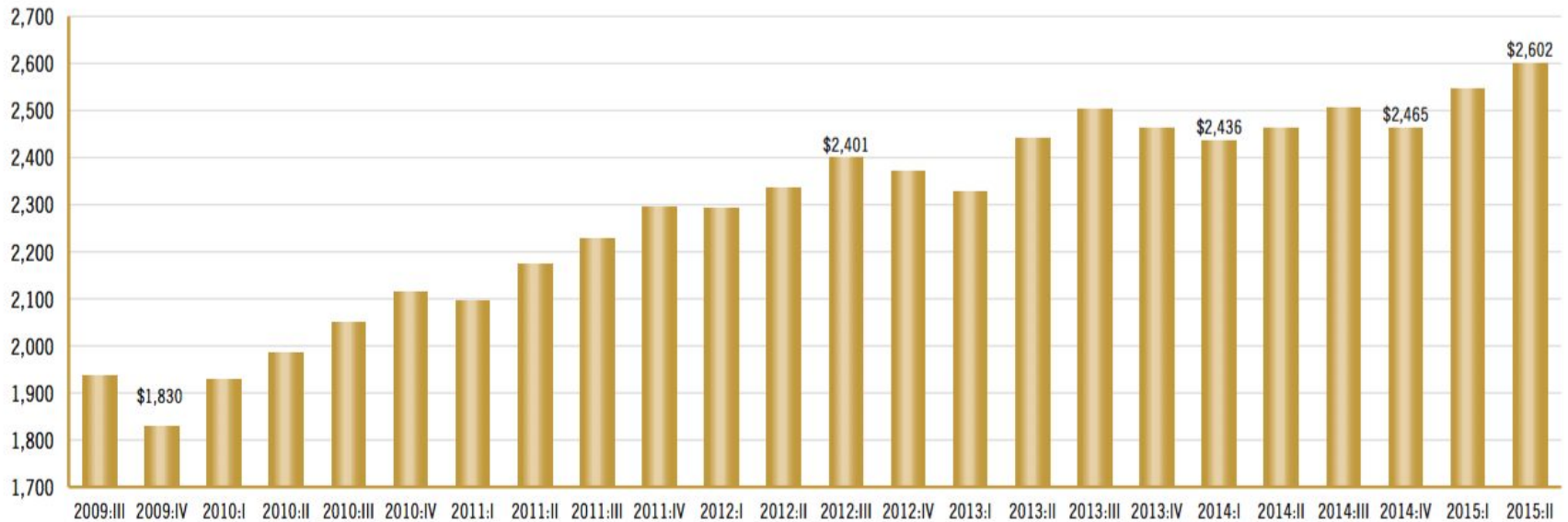
1.	SAN FRANCISCO, CALIF.	15,740.60
2.	SAN JOSE, CALIF.	6,883.22
3.	BOSTON, MASS.	4,443.43
4.	NEW YORK, N.Y.	4,218.20
5.	LOS ANGELES-LONG BEACH, CALIF.	2,053.90
6.	SEATTLE-BELLEVUE-EVERETT, WASH.	1,204.83
7.	OAKLAND, CALIF.	1,185.50
8.	CHICAGO, ILL.	1,064.91
9.	WASHINGTON, D.C.	857.18
10.	SAN DIEGO, CALIF.	805.08

(\$M USD)

Annual Median Price of Condominiums in Five-County Greater Boston Region, 2000–2015

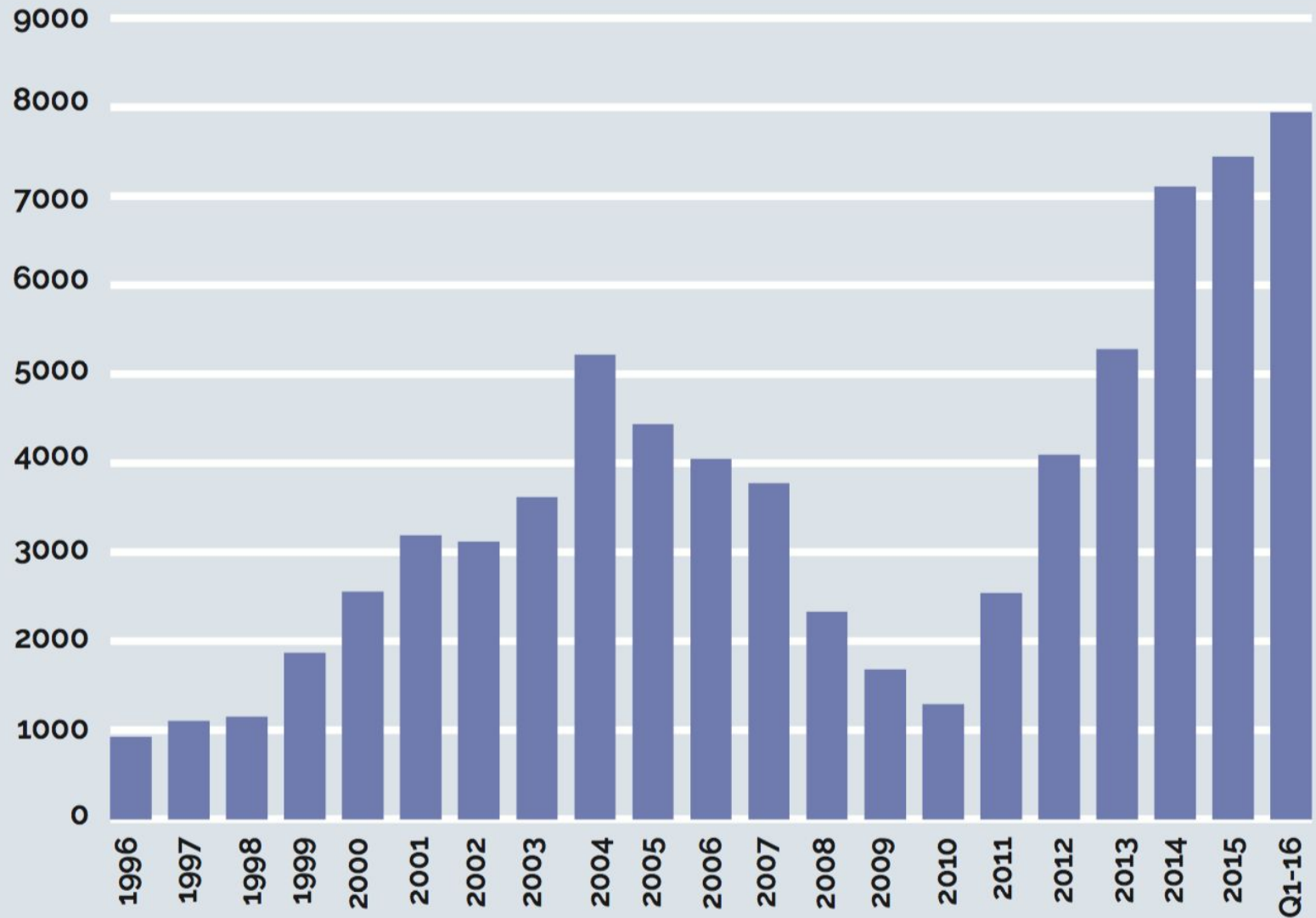


Monthly Rent for Boston Area Apartments 2-Bedroom Units 2009: Q3–2015: Q2



Source: The Greater Boston Housing Report Card

UNITS IN CONSTRUCTION 1996-2016



Source: City of Boston - Housing a Changing City Q1 2016 Report





Source: Boston Globe

Report: Boston Ranks No. 1 For City Income Inequality



Boston's Seaport District on Thursday, a day after General Electric said it will relocate its global headquarters there (Jesse Costa/WBUR)

90.9 wbur
BOSTON'S NPR® NEWS STATION



By **BENJAMIN SWASEY**



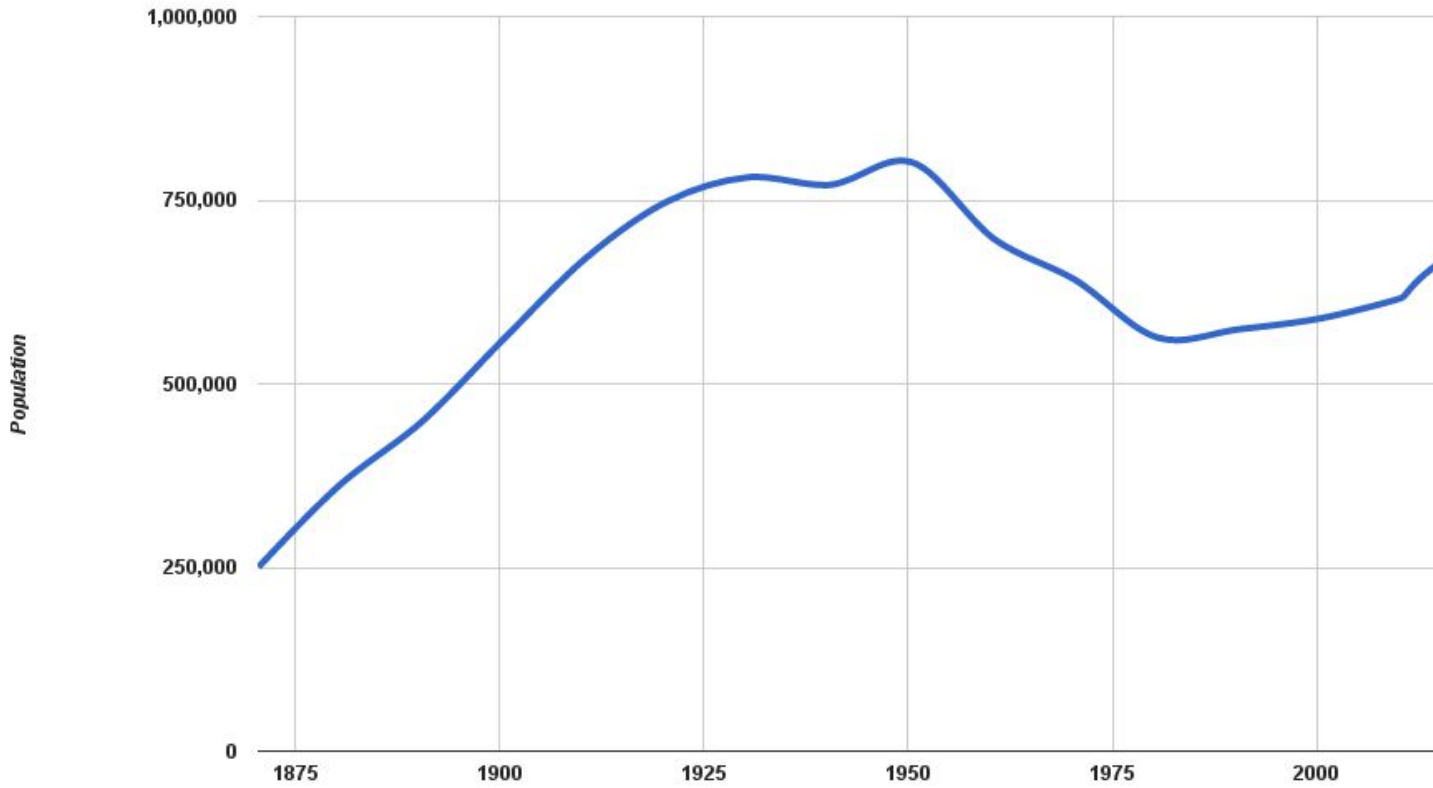
Updated January 14, 2016, 4:50 pm



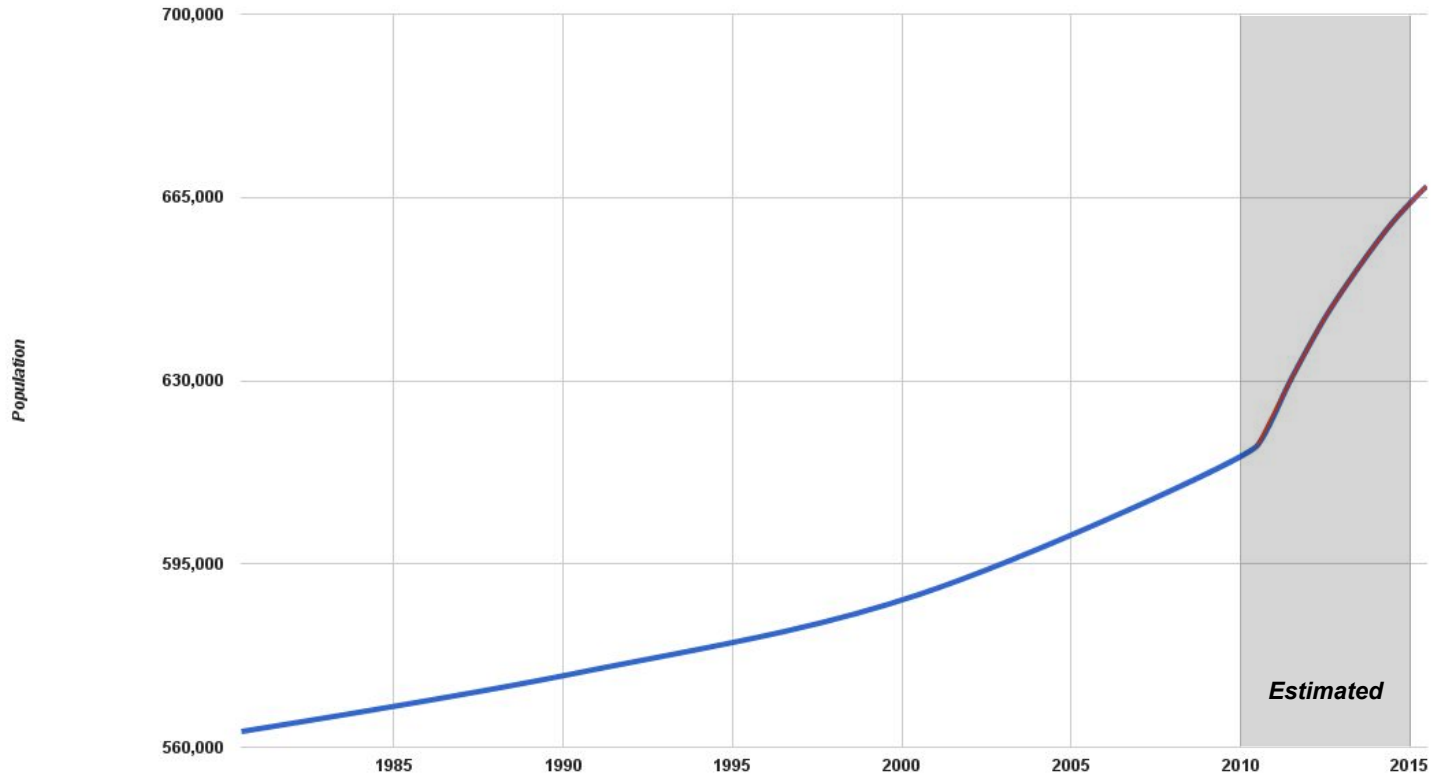
BOSTON Boston is the most unequal big city in America, a new report finds.

In 2014, households earning near the top of Boston's income distribution made nearly 18 times the earnings of households closer to the bottom.

City of Boston Population (1870 - 2015)



City of Boston Population (1980 - 2015)







WHAT'S YOUR QUESTION?

What if public transit got you online and kept you there?

Why are duck boats just for tours?

#GOBOSTON2030

CAN I BE DELIVERED TO WORK ON TIME?

WHAT'S YOUR QUESTION?





PILOT.BOSTON.GOV

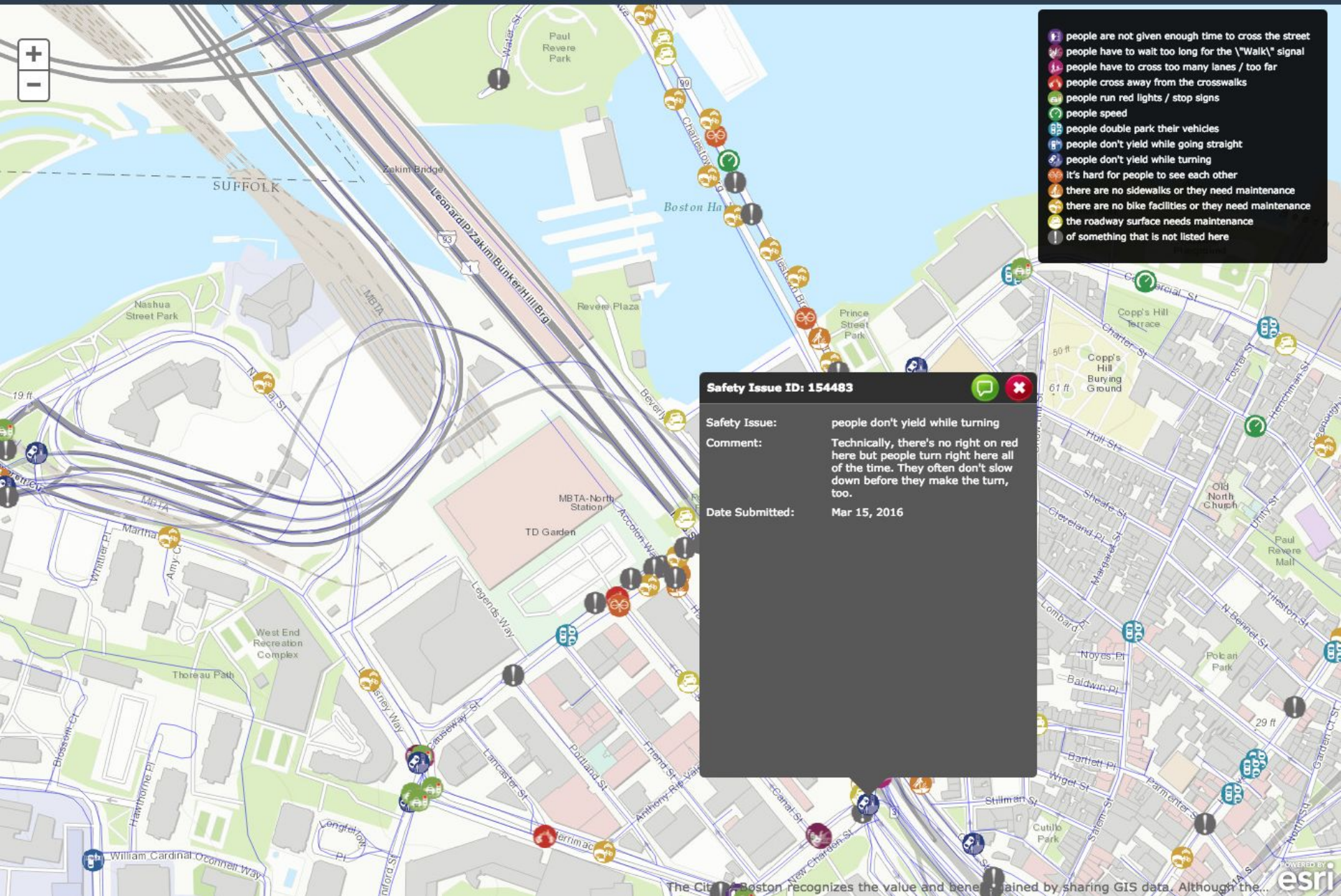
Our new website in progress.

NEXT.BOSTON.GOV

Documenting the process of building the new site.

Beautifully designed, delightful to use, and thoroughly useful. That is our goal for Boston.gov and here is your first look. As you'll see, we have a lot of work to do, but as we experiment we invite you to explore our test site, give us feedback, and follow our progress.

STEP 1 ✓ STEP 2 ✓ STEP 3 ✓ STEP 4 ✓ STEP 5 STEP 6



- people are not given enough time to cross the street
- people have to wait too long for the "Walk" signal
- people have to cross too many lanes / too far
- people cross away from the crosswalks
- people run red lights / stop signs
- people speed
- people double park their vehicles
- people don't yield while going straight
- people don't yield while turning
- it's hard for people to see each other
- there are no sidewalks or they need maintenance
- there are no bike facilities or they need maintenance
- the roadway surface needs maintenance
- of something that is not listed here

Safety Issue ID: 154483

Safety Issue: people don't yield while turning

Comment: Technically, there's no right on red here but people turn right here all of the time. They often don't slow down before they make the turn, too.

Date Submitted: Mar 15, 2016

CITY SCORE

LEGEND
1 (FOLLOW UP)
1 (MAINTAINING)
1 (EXCEEDING)

	DAY	WEEK	MONTH	QUARTER
LIBRARY USERS	1.79	1.62	1.62	1.66
311 INCIDENTS	1.63	1.64	1.35	1.32
PART I CRIMES	1.57	1.50	1.39	1.39
MISSED TRASH ON-TIME %	1.25	1.25	1.23	1.22
SIGN INSTALLATION ON-TIME %	1.25	1.00	1.15	1.02
STREETLIGHT ON-TIME %	1.25	1.14	1.05	0.95
ON-TIME PERMIT REVIEWS	1.24	1.17	1.18	1.15
GRAFFITI ON-TIME %	1.13	1.16	1.20	1.19
EMS INCIDENTS	1.01	1.06	1.07	1.10
311 CALL CENTER PERFORMANCE	0.97	1.01	1.00	1.00
EMS RESPONSE TIME	0.97	0.97	0.98	0.99
311 RESPONSE TIME	0.95	0.96	0.95	0.93
SIGNAL REPAIR ON-TIME %	0.92	1.08	0.89	0.88
CONSTITUENT SATISFACTION SURVEYS	0.75	0.79	0.94	0.89
STABBINGS (TREND)	0.67	1.76	1.39	1.71
PARKS MAINTENANCE ON-TIME %	0.42	0.99	0.94	0.90
POTHOLE ON-TIME %	0.42	0.92	0.88	0.92
311 ATTENDANCE		0.96	0.96	0.96
HOMICIDES (TREND)			4.82	4.51
SHOOTINGS (TREND)		5.16	3.06	2.48
TREE MAINTENANCE ON-TIME %		1.25	0.93	1.20
	1.07	1.37	1.38	1.35

PUBLIC WORKS DEPARTMENT

Waste Reduction and Construction Management (Monthly)

Cost Per
Mile to Resurface
\$ 296,190

Total Tons
Residential Waste
72,369

Total Tons
Recycling
17,817

Code Enforcement Violations
(Daily)
▲ 26,801

Ensure Clean, Safe City Streets (Daily)

Streetlight Outages
▲ 79% Overtime
18.7 Avg days to close

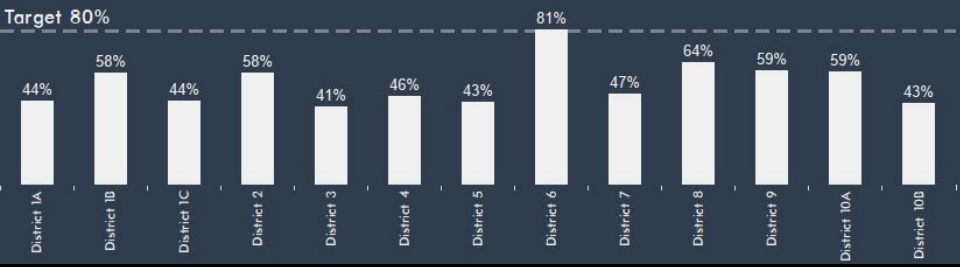
Sidewalk Repair
▲ 63% Overtime
142.2 Avg days to close

Pothole Repair
▼ 77% Overtime
2.7 Avg days to close

Missed Trash Requests
▼ 89% Overtime
1.0 Avg days to close

Achieve Exceptional Performance in Districts (Daily)

Overtime District Yard Performance

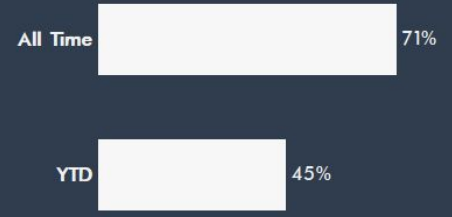


Implement Energy and Cost-Saving Lighting (Weekly)

kWh Saved

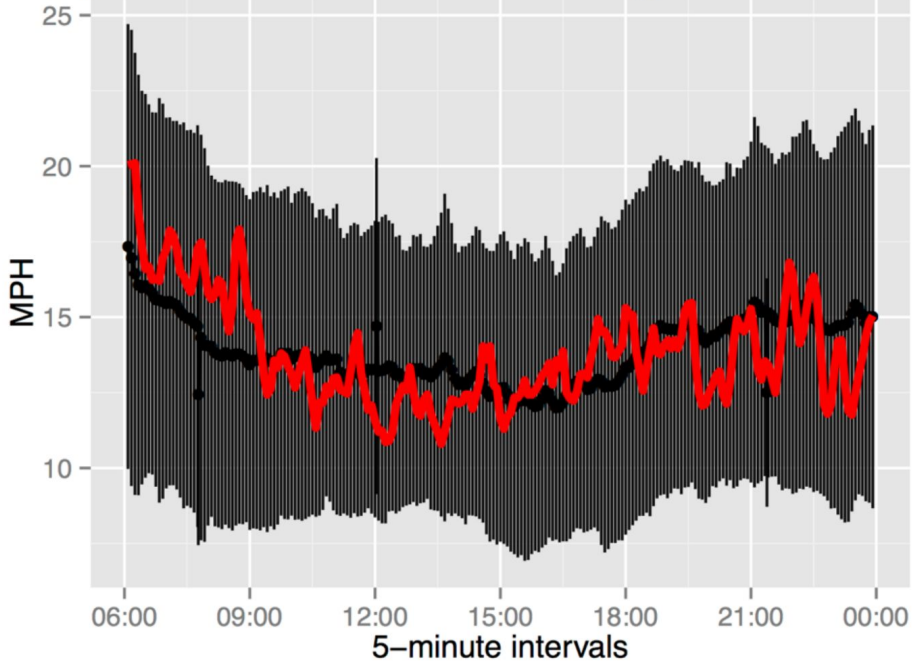
1,526,697
\$ 458,009

LED Retrofits % Complete





Speed on bus cross streets – average vs Feb 01 2015



THANK YOU

